

## PLAY DATE & RESORTSCAPE

### YARN

PLAY DATE RESORTSCAPE

TYPE: MONOFILAMENT

COMPOSITION/STRUCTURE: POLYETHYLENE

### TURF

PILE/FACE WEIGHT: 60 OZ.

MACHINE GAUGE: 1/2 IN.

TUFTED PILE HEIGHT: 1 3/4 IN. 1 5/8 IN.

### FINISH COATING

COATING: POLYURETHANE 20 OZ. PER SQ. YARD

TOTAL PRODUCT WEIGHT: 86 OZ. 76 OZ.

MICROBAN TECHNOLOGY: NO

### MANUFACTURED ROLLS

WIDTH: 15 FT.

APPROX. LENGTH: 100 - 110 FT. 85 FT.

DRAINAGE RATE: &gt; 30 IN. PER HOUR

TRAFFIC: LIGHT TO MODERATE

### BACKING

PRIMARY BACKING: WOVEN POLYPROPYLENE

SECONDARY BACKING: POLYURETHANE

COMPOSITION/STRUCTURE: 2 LAYERS 13 PIC BLACK

WEIGHT: 6 OZ. PER SQ. YARD

### PARTICULATE INFILL

TYPE: QUALITY INFILL

WEIGHT: 1-3 LBS. PER SQ. FT.

HEIGHT: APPROXIMATELY 1/2 IN. - 3/4 IN.



RESORTSCAPE

# HERO

FLOORING



# HERO

# TURF



## H.1.1.T.

### YARN

COLOR: SUMMER BLEND

TYPE: TEXTURIZED MONOFILAMENT

COMPOSITION/STRUCTURE: POLYETHYLENE

### TURF

PILE/FACE WEIGHT: 44 OZ.

MACHINE GAUGE: 3/16 IN.

TUFTED PILE HEIGHT: 0.875 IN.

### BACKING

PRIMARY BACKING: WOVEN POLYPROPYLENE

SECONDARY BACKING: POLYURETHANE

COMPOSITION/STRUCTURE: 2 LAYERS 13 PIC BLACK

WEIGHT: 6 OZ. PER SQ. YARD

### FINISH COATING

COATING: POLYURETHANE 20 OZ. PER SQ. YARD

TOTAL PRODUCT WEIGHT: 70 OZ. PER SQ. YARD

MICROBAN TECHNOLOGY: NO

### PARTICULATE INFILL

TYPE: QUALITY INFILL

WEIGHT: 2-5 LBS. PER SQ. YARD

COLORS: GREEN, BLACK, OR NATURAL

### MANUFACTURED ROLLS

WIDTH: 15 FT.

APPROX. LENGTH: 100 FT.

DRAINAGE RATE: 920 LBS.

TRAFFIC: LIGHT - HEAVY



1371 RAIDERS WAY SUITE 160 HENDERSON, NV 89052  
702-202-4928 | WWW.HEROFLOORING.COM



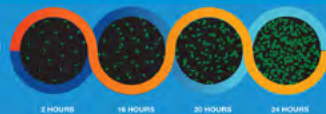
HERO  
TURF



with built-in  
**MICROBAN®**  
ANTIMICROBIAL TECHNOLOGY

Microban is fully integrated into the manufacturing process of the Hero Turf, becoming part of the molecular structure of the product. It does not wash off or wear away. Ultimately, Hero Turf delivers a cleaner product because of the integration of Microban, which inhibits the growth of mold, mildew and bacteria and reduces odors by 99%. The treated product from Hero Flooring remains cleaner and is protected against the proliferation of stain and odor-causing bacteria.

Unprotected  
Surface



Surface With  
Antimicrobial  
Protection



## FEATURED BENEFITS

- ✓ Microban® Antimicrobial Protection
- ✓ Odor Reduction
- ✓ Soft Feel
- ✓ High Performance
- ✓ Pad or No Pad
- ✓ Indoor & Outdoor
- ✓ Multipurpose Use



## WORLD SERIES & ROYAL

### YARN

COLOR: FIELD GREEN / OLIVE GREEN  
TYPE: TEXTURIZED POLYETHYLENE  
COMPOSITION/STRUCTURE: TUFTED

### TURF

PILE/FACE WEIGHT: 40 OZ.  
MACHINE GAUGE: 3/16 GAUGE  
TUFTED PILE HEIGHT: 1/2 IN.

### BACKING

PRIMARY BACKING: WOVEN POLYPROPYLENE  
SECONDARY BACKING: 20 OZ. POLYURETHANE  
PAD THICKNESS: 5MM (ONLY WORLD SERIES)  
COMPOSITION/STRUCTURE: 2 LAYERS 13 PIC BLACK  
WEIGHT: 6 OZ. PER SQ. YARD

### FINISH COATING

COATING: POLYURETHANE 20 OZ. PER SQ. YARD  
TOTAL PRODUCT WEIGHT: 66 OZ.  
MICROBAN TECHNOLOGY: YES

### MANUFACTURED ROLLS

WIDTH: 15 FT.  
APPROX. LENGTH: 125 - 150 FT.  
APPROX. SHIPPING WEIGHT: 700 - 800 LBS.  
ROLL DIAMETER: 24 IN.

### PARTICULATE INFILL

TYPE: QUALITY INFILL  
WEIGHT: 2-3 LBS. PER SQ. YARD



WORLD SERIES  
Hero Turf - Royal with  
added cushion backing



## GRAND SLAM

### YARN

COLOR: GREEN  
TYPE: DIAMOND MONOFILAMENT  
COMPOSITION/STRUCTURE: POLYETHYLENE

### TURF

PILE/FACE HEIGHT: 3/4" IN.  
MACHINE GAUGE: 3/16 IN.  
TUFTED PILE HEIGHT: 1/2 IN.

### BACKING

PRIMARY BACKING: POLYURETHANE  
SECONDARY BACKING: N/A  
PAD THICKNESS: 5MM  
COMPOSITION/STRUCTURE: 2 LAYERS 15 AND 18 PIC  
WEIGHT: 7 OZ PER SQ. YARD

### FINISH COATING

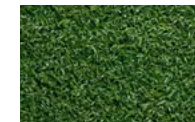
COATING: POLYURETHANE  
TOTAL PRODUCT WEIGHT: 113/75 OZ. PER SQ. YARD  
MICROBAN TECHNOLOGY: NO

### MANUFACTURED ROLLS

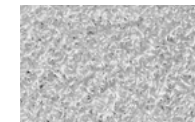
WIDTH: 15 FT.  
APPROX. LENGTH: 125-150 FT.  
APPROX. SHIPPING WEIGHT: 700-800 LBS.  
TRAFFIC: HIGH



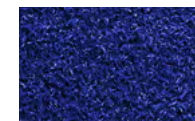
## AVAILABLE COLORS FOR ROYAL, WORLD SERIES, AND GRAND SLAM



GREEN



WHITE



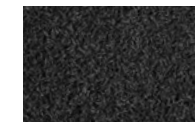
BLUE



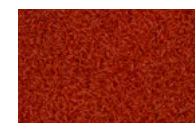
GRAY



RED



BLACK



ORANGE



PURPLE