

PARTLY CLOUDY

Carpet Tile



MADE IN USA

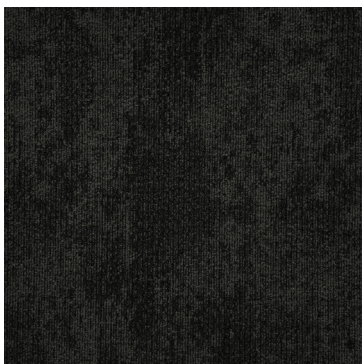
heroflooring.com

HERO
FLOORING

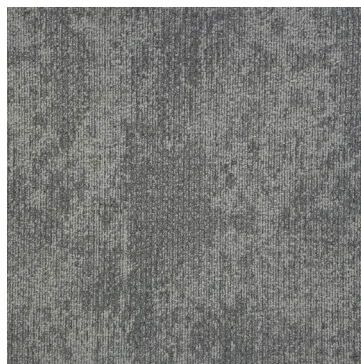
COLORS:



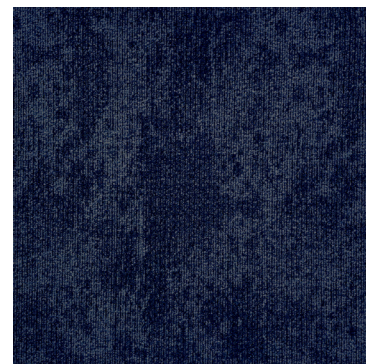
Magnetite



Onyx



Platinum



Cobalt

TECHNICAL INFORMATION:

SPECS	HERO VALUES
Product Type	Carpet Tile
Construction	Tufted
Surface Appearance	Level Patterned Multi-Colored Loop
Gauge	1/12" (47.00 rows per 10cm)
Pile Weight	15 oz/yd ²
Pile Thickness	.082" (2.15mm)
Estimated Total Thickness	.187" (5.00mm)
Stitches Per Inch	11.0 (43.31 per 10 cm)
Dye Method	Solution Dyed
Fiber Type	Colorstrand® SD Nylon
Stain Release Technology	EcoSentry Plus Stain Protection
Soil Release Technology	EcoSentry Soil Protection
Density	6585
Weight Density	98775
Backing Materials	EcoFlex Matrix
Installation Method	Monolithic / Half-Lap / Brick Ashlar / Basket Weave / Plank Half-Lap / Monolithic Stepping / Random / Herringbone
Size	24x24"
Flammability	ASTM E 648 Class I (Glue Down)
Smoke Density	ASTM E 662 Less than 450
Static Propensity	AATCC-134 Under 3.5 KV
IAQ Green Label Plus	1171
NSF 140	Gold
CRI Appearance Retention Rating	Heavy

SERVICE – WARRANTIES:

- Lifetime Limited Carpet Tile Warranty
- Lifetime Limited Colorfastness to Light
- 10 Year Limited Colorfastness to Atmospheric Contaminants
- 10 Year Stain Warranty
- Lifetime Static