

# GRAND PRIX

Carpet Tile

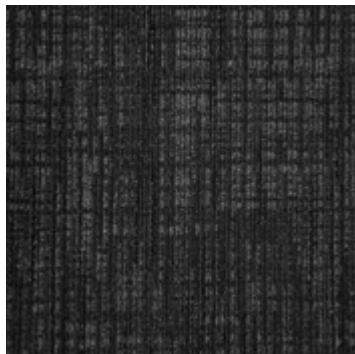


MADE IN USA

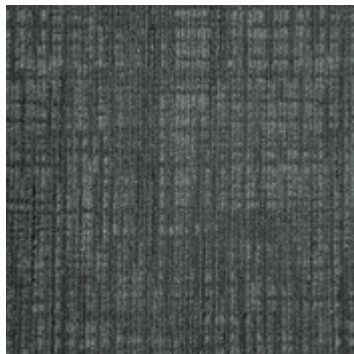
[heroflooring.com](http://heroflooring.com)

**HERO**  
FLOORING

## COLORS:



Madrid



London



Sydney



Paris

## TECHNICAL INFORMATION:

### SPECS

### HERO VALUES

<b>Product Type</b>	Carpet Tile
<b>Construction</b>	Tufted
<b>Surface Appearance</b>	Textured Patterned Loop
<b>Gauge</b>	1/12 (47.00 rows per 10 cm)
<b>Tufted Face Weight</b>	17 oz/yd <sup>2</sup> (576 g/m <sup>2</sup> )
<b>Approximate Total Thickness</b>	.268" (6.81 mm)
<b>Stitches Per Inch</b>	11.0 (43.31 per 10 cm)
<b>Dye Method</b>	Solution Dyed
<b>Fiber Type</b>	Colorstrand® SD Nylon
<b>Stain Release Technology</b>	EcoSentry Plus Stain Protection
<b>Soil Release Technology</b>	EcoSentry Soil Protection
<b>Backing Type</b>	EcoFlex™ MATRIX
<b>Installation Method</b>	Multi-Directional / Vertical Ashlar / Quarter-Turn
<b>Size</b>	24" x 24" (.6096 m x .6096 m)
<b>Flammability</b>	ASTM E 648 Class 1 (Glue Down)
<b>Smoke Density</b>	ASTM E 662 Less than 450
<b>Static Propensity</b>	AATCC-134 Under 3.5 KV
<b>IAQ Green Label Plus</b>	1171

### Warranties

Lifetime Limited Carpet Tile Warranty  
 Lifetime Limited Colorfastness to Light  
 10 Year Limited Colorfastness to Atmospheric Contaminants  
 10 Year Stain Warranty  
 Lifetime Static