

WORLD TOUR

Carpet Tile

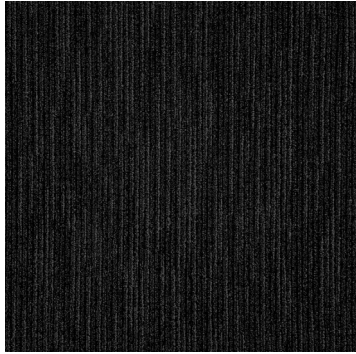


MADE IN USA

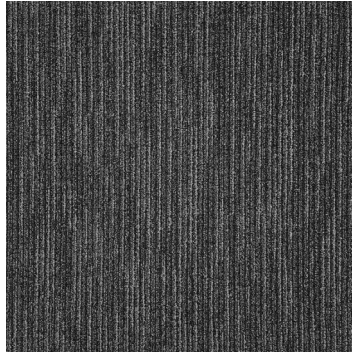
heroflooring.com

HERO
FLOORING

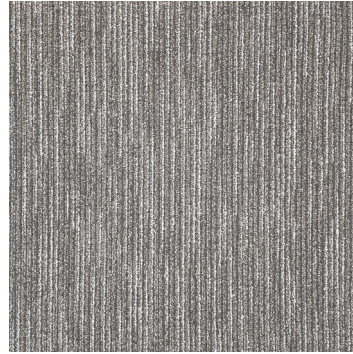
COLORS:



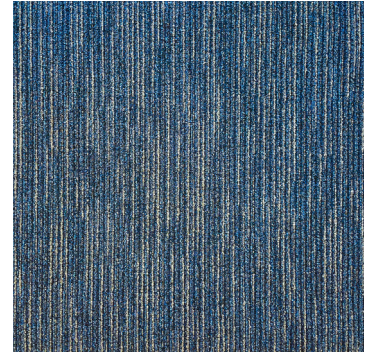
Madrid



London



Sydney



Paris

TECHNICAL INFORMATION:

SPECS

HERO VALUES

| | |
|------------------------------------|--|
| Product Type | Carpet Tile |
| Construction | Tufted |
| Surface Appearance | Textured Patterned Loop |
| Gauge | 1/12 (47.00 rows per 10 cm) |
| Tufted Face Weight | 17 oz/yd ² (576 g/m ²) |
| Approximate Total Thickness | .268" (6.81 mm) |
| Stitches Per Inch | 11.0 (43.31 per 10 cm) |
| Dye Method | Solution Dyed |
| Fiber Type | Colorstrand® SD Nylon |
| Stain Release Technology | EcoSentry Plus Stain Protection |
| Soil Release Technology | EcoSentry Soil Protection |
| Backing Type | EcoFlex™ MATRIX |
| Installation Method | Multi-Directional / Vertical Ashlar / Quarter-Turn |
| Size | 24" x 24" (.6096 m x .6096 m) |
| Flammability | ASTM E 648 Class 1 (Glue Down) |
| Smoke Density | ASTM E 662 Less than 450 |
| Static Propensity | AATCC-134 Under 3.5 KV |
| IAQ Green Label Plus | 1171 |

Warranties

Lifetime Limited Carpet Tile Warranty
 Lifetime Limited Colorfastness to Light
 10 Year Limited Colorfastness to Atmospheric Contaminants
 10 Year Stain Warranty
 Lifetime Static